



Mission First. Every Individual, Every Day.®

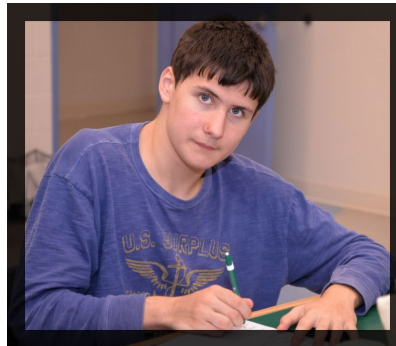
New Funding Opportunity

A Message from Rita M. Gardner, President and CEO



I am very excited to announce this new funding opportunity through which an individual gift to Melmark could cost you only pennies on the dollar.

The Pennsylvania Educational Improvement Tax Credit (EITC) program is a state program that allows donors to re-direct their Pennsylvania state tax dollars to approved Educational Improvement Organizations (EIO), of which **Melmark** is one.



Friends of Education is a state-approved special purpose entity (SPE) through which individual donors may participate in the EITC program and receive up to a 90% state tax credit for their donations earmarked to an approved EIO, in our case, **Melmark**.

Friends of Education still has tax credits available, and we are reaching out to the **Melmark** community to make them aware of this opportunity to support **Melmark** and receive 90% in tax credits for that support. Tax credits are limited and offered on a first-come, first-served basis.



Here is an example of how a \$10,000 contribution to Melmark could, with tax credits, cost a donor as little as \$750.

	Standard Gift	EITC Gift
Contribution	(\$10,000)	(\$10,000)
PA State Tax Credit	\$0	\$9,000
Federal Deduction (Assumes 25% tax rate)	\$2,500	\$250
Out-of-Pocket Cost	(\$7,500)	(\$750)

Here are some additional fast facts about how this program works:

- Participation in the *Friends of Education* special purpose entity is open to individuals as long as they are an employee, partner, or shareholder in a business that pays Pennsylvania state taxes.
- For those interested, *Friends of Education* will send a joinder that, once signed, will make the individual a member of the *Friends of Education* special purpose entity; it is on the joinder where you will mark **Melmark** as the recipient of your donation.
- *Friends of Education* requires a minimum donation of \$7,500 per year in order to participate (i.e., \$7,500 in 2023 and \$7,500 in 2024).
- *Friends of Education* will send its SPE members a Form K-1 in January 2024 for their 2023 taxes.

For more information, you may contact the *Friends of Education* directly at:

Todd S. Unger, Esq., todd.unger@pataxcredits.org
 Jed Silversmith, Esq., jed.silversmith@pataxcredits.org

You may also contact **Melmark's** Director of Advancement,
 Lisa Ketcham, at lketcham@melmark.org.

Thank you for considering this new source of funding for
Melmark—Mission First. Every Individual, Every Day.



Rita M. Gardner M.P.H., LABA, BCBA, CDE[®]

Any information provided by Melmark or its representatives is not official financial or tax advice. Please consult your own tax advisor regarding participation.



Melmark is registered with the Federal Government as a 501(c)3 organization (EIN: 23-6399542) and is registered as a charitable organization with the Commonwealth of Pennsylvania. The official registration and financial information for Melmark may be obtained from the Pennsylvania Department of State by calling toll-free, within Pennsylvania, 1-800-723-0999. Registration does not imply endorsement.



Contact Us / About Us / Giving

Melmark 

Mission First. Every Individual, Every Day.[®]

Melmark is a multi-state human service provider with premier private special education schools, professional development, training, and research centers. We are committed to enhancing the lives of individuals within diverse communities with autism, intellectual and developmental disabilities, and their families by providing exceptional evidence-based and applied behavior analytic services to every individual, every day.