

Research and Publications

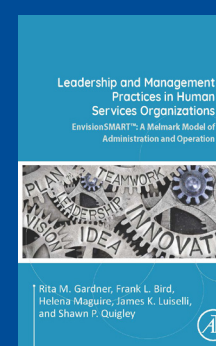
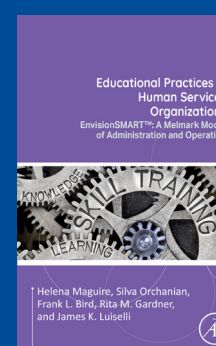
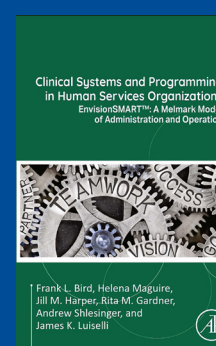
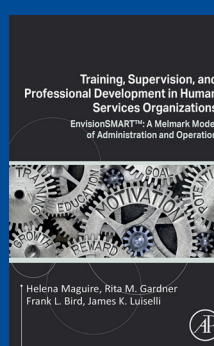
Pennsylvania, New England, and the Carolinas

2025



- Weatherly, N. L., & Ruane, J. (2025). Building Effective Training Systems Within Organizations. In *Clinical Handbook of Autism Intervention Training*. Cham: Springer Nature Switzerland.
- Nagy, L. (2025). It's Never Too Late to Communicate: Increasing Communication Access for Adults with Intellectual Disabilities and Autism. *Autism Spectrum News*.
- Gardner, R. M., Bird, F. L., Maguire, H., Luiselli, J. K., & Quigley, S. (2025). Leadership and management practices in human services organizations: EnvisionSMART™, A Melmark model of program administration and operation. *Elsevier/Academic Press*.
- Buckley, J., Brodeur, J., Clark, M., Bird, F., & Luiselli, J. K. (2025). Improving clothing and grooming appearance of students with neurodevelopmental disabilities: Evaluation of a measurement checklist and care provider intervention. *Behavioral Interventions*.
- Leaf, J. B., Javed, A., Klick, S., Cihon, J. H., Leaf, R., & McEachin, J. (2025). An Overview of Early Intensive Behavioral Intervention for Individuals Diagnosed with Autism Spectrum Disorder. *Handbook of Evidence-Based Practices in Autism Spectrum Disorder*.
- Linnehan, A., Baldwin, J., Fuhrmann-Knowles, A., Klick, S., Javed, A., Weiss, M.J. (2025). We Have Assent, But Do We?. In K. Dyer, M.J. Weiss, L. Tereshko, A. Linnehan. (Eds.). *Perspectives on Neurodiversity and Belonging Reflections for Behavior Analysts*. Sloan Publishing.
- Luiselli, J. K. (Guest Editor). (2025). Special section on trauma informed care of persons with intellectual and developmental disabilities. *Advances in Neurodevelopmental Disorders*.
- Luiselli, J. K., Bird, F., Harper, J. M., Ruane, J., & Weiss, M. J. (2025). Trauma-informed care (TIC) of persons with intellectual and developmental disabilities: A pilot survey of board-certified behavior analysts at a human services organization. *Behavior Analysis in Practice*.
- Luiselli, J. K., Bird, F., Harper, J. M., Ruane, J., & Weiss, M. J. (2025). Evaluation of service provider knowledge and perceptions of trauma-informed care. *Advances in Neurodevelopmental Disabilities*.
- Sturmey, P., Lang, R., & Luiselli, J. K. (Eds.). (2025). *Lifespan Treatment for Autistic individuals: A Guide to Evidence-based Practices*. Oxford University Press.
- Wachtel, L., & Luiselli, J. K. (2025). Electroconvulsive therapy. In Sturmey, P., Lang, R., & Luiselli, J. K. (Eds.), *Lifespan Treatment for Autistic individuals: A Guide to Evidence-based Practices*. Oxford University Press.
- Maguire, H. Gardner, R., & Bird, F. (2025). Meet Melmark. *Science in Autism Treatment*.
- Waga, P. J., & Benedetto, A. M. (2025). Clinical Corner: What are some quality of life indicators for adults with autism and intellectual disabilities? *Science in Autism Treatment*.
- Redcay, L., Duffy, A., & Gasiewski, K. (2025). Clinical Corner: What are some areas of concern when working with aging adults with autism? *Science in Autism Treatment*.
- Redcay, L., Duffy, A., & Gasiewski, K. (2025). Clinical Corner: How can we best support adults with autism, their families and teams, through the aging process at home? *Science in Autism Treatment*.
- Gardner, R., & Weiss, M. J. (2025). Visioning the future of residential treatment: Creating care communities. *Science in Autism Treatment*.
- Konowal, K., Carson, L., Horvat, M., Evans, J., & Luiselli, J.K. (2025). Training Care Providers to assist Residential Students with Disabilities to Wear Personal Clothing; a Five-Case Replication Series. *Clinical Case Studies*.
- DeLapp, C. (2025). Advancing Community Inclusion for Individuals with ID/DD: History, Challenges and the Aide of Caregivers. *Autism Spectrum News*.

Melmark is expanding and raising the quality of service delivery systems throughout the country by disseminating and replicating the Melmark Model of Program Development and Clinical Treatment. Through an advanced program called EnvisionSMART™, Melmark showcases professional practitioner manuals, proprietary software and a four-book practitioner series. Combined, this program provides an all-encompassing array of well-researched, documented tools to enable other providers to utilize the Melmark Model for Program Development. This will elevate the standard of services, while addressing every aspect of the critical educational, clinical and administrative functions that are vital to evidence-based, special education programs.



Melmark

Mission First. Every Individual, Every Day.®

EnvisionSMART™